

How to send file directly to Cara project

As first step set default values and save configuration:

Whafro1 v1.9 - Set Default

Select Observatory: Observatory data 01 [Update current sheet]

Location

CARA code: XXX-00 Remember !: CARA is at <http://cara.uai.it>

(Facility-Site)'s name: the name of your site

Observer's name: the name of observer

Latitude site: xx:xx:xx N Longitude: xx:xx:xx E Altitude: xxxx msl

Telescope: Newton Diam. (mm): 500 Focal lng (mm): 2500

CCD Sensor: xxxxxxxx Pixel Scale arcsec/pixel X: 2.3 Y: 2.3

A/D Gain (e-/ADU): 0.00 Read Noise (e-RMS): 0.00

Cara identity

CARA user-ID: pinco Password: palla

Obs. @mail: rtrabatti@yahoo.it

Local and net resources

SMTP server: smtp.cara.uai.it

Destination mail: afrhodata@cara.uai.it

Comet data file: C:\Soft00Cmt.txt [Browse..]

Tyco 2 catalog path: C:\test_afrho_c\tycho2\ [Browse..]

URL for orbital datas

<http://cfa-www.harvard.edu/iau/Ephemerides/Comets/Soft00Cmt.txt>

Save Default Option and EXIT [Restore]

Pic. 1 – Default values

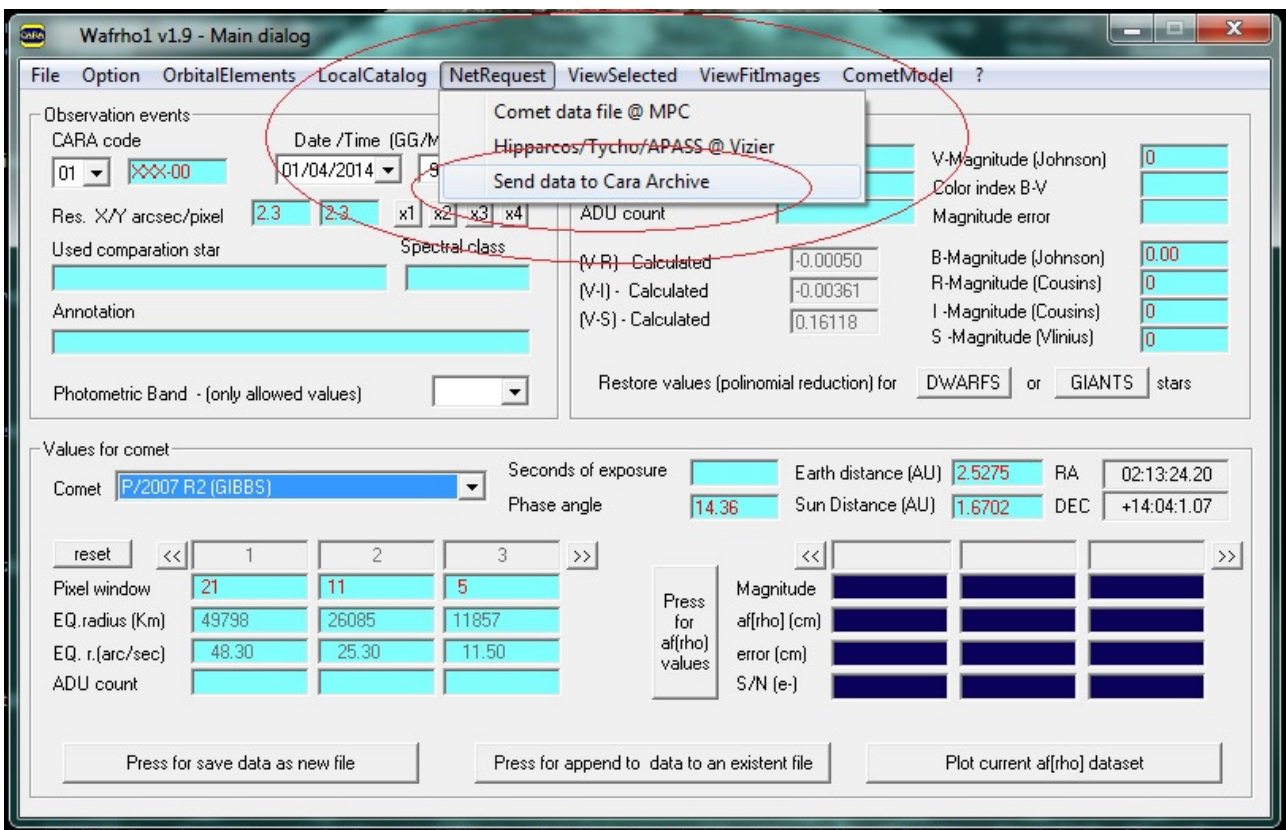
Settings :

[Obs.@mail](mailto:rtrabatti@yahoo.it) : Your mail address.

SMTP server : **smtp.cara.uai.it**

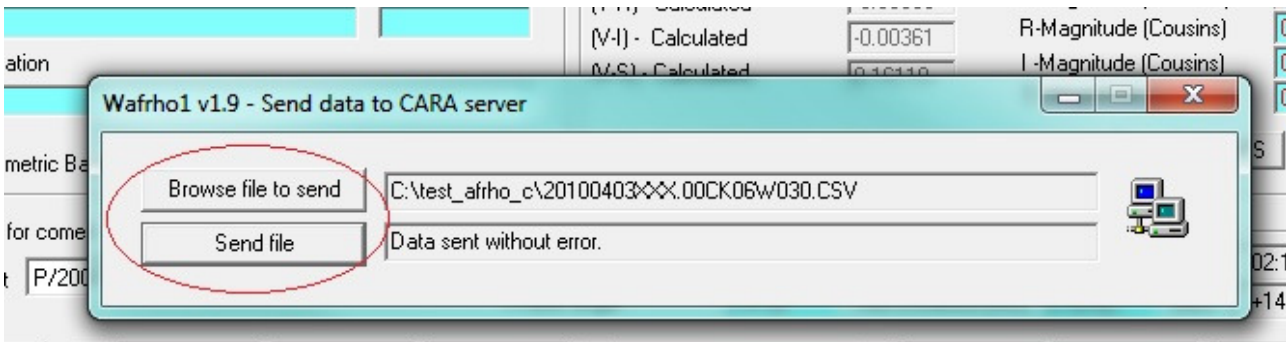
Destination mail : afrhodata@cara.uai.it

Now you can send directly your data files to Cara project.



Pic. 2 Send menu

Go to the " NetRequest" menu and choose "Send data to Cara Archive"



Pic. 3 Send window.

Now with the button "Browse file to send" choose on your PC the CSV file to send and type "Send file".

The program will tell you the result of sending.